

NOBLE*SECURITY



NOBLE HOUSE
The Comprehensive RemedySM

NOBLE*SECURITY

Noble House

**828 S.E. 8th Avenue
Deerfield Beach, FL 33441
Sales (561) 392-6700**

**Technical Support (954) 418-0829
Fax (954) 418-9631**

Table of Contents

1 QUICK START	1-1
Starting Noble*Security	1-1
The Noble*Security Main Window	1-2
File Menu.....	1-3
Utilities Menu	1-3
2 FILE.....	2-1
File: Create Profile	2-1
File: Create User.....	2-2
File: Edit Profile	2-3
File: Edit User.....	2-4
File: Exit	2-4
3 UTILITIES	3-1
Utilities: Password Change.....	3-1
Utilities: Refresh Application Permissions.....	3-2
INDEX	1

1 Quick Start

This quick start section introduces you to the main window of Noble*Security and helps you get the software up and running quickly.

Because Noble*Security requires Noble*Direct for Windows, you must set up Noble*Direct before using Noble*Security. Please refer to the documentation for Noble*Direct for Windows for assistance.

This quick start section covers the following topics:

- Starting Noble*Security
- The Noble*Security Main Window

Starting Noble*Security

To start Noble*Security:

1. From the Windows Start menu, select the Programs group, then the Noble House group.
2. Click on the Noble Security icon; the system presents the logon dialog.

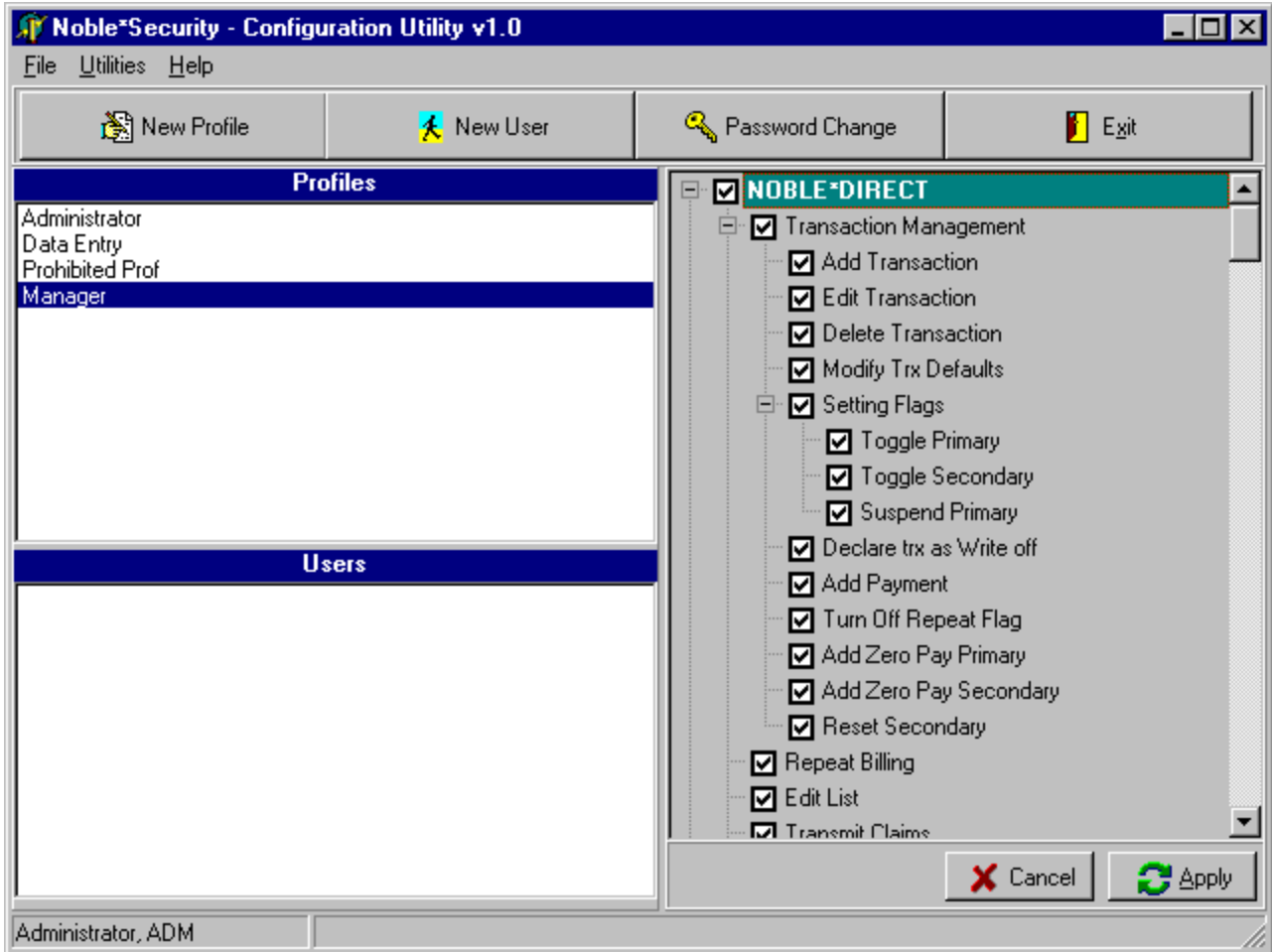


3. Select your user ID from the drop-down menu, enter your password, and click OK.

After a few moments and some informational windows, the Noble*Security main window appears. See The Noble*Security Main Window for more details.

The Noble*Security Main Window

The main window appears when you start Noble*Security. By selecting from the options on this screen, you can access all of the functionality in the software.



Noble*Security allows you to set up Users and user Profiles:

Users - A User is a person who uses any of the Noble House applications; users are categorized into User Profiles.

Profiles - A Profile is a way to categorize users (e.g., administrator, data entry person, etc.). Users in a profile are allowed access to the features of Noble House applications that are enabled for that profile.

You can use the menu options and buttons to add and modify Users and Profiles. To view a Profile, click on its name in the list of profiles; the system displays the information in the panel to the right.

NOTE: Before exiting Noble Security, make sure you propagate your changes to the Noble House applications by using the Refresh Application Permissions utility.

For details about the commands on each menu in the main window, see the following:

File Menu

Utilities Menu

Help Menu

File Menu

The File menu provides commands that allow you to manage Users and Profiles. A list of the commands on the File menu and a description of each command follows. Details on these commands are explained in the File section of this documentation.

Menu Command	Description
Create Profile	Allows you to create a new category for user access to Noble House applications.
Create User	Allows you to create a new user for a profile.
Edit Profile	Allows you to modify a category for user access to Noble House applications.
Edit User	Allows you to modify a user in a profile.
Exit	Exits the software.

Utilities Menu

The Utilities menu provides support utilities for managing Users and Profiles. A list of the commands on the Utilities menu and a description of each command follows. Details on these commands are explained in the Utilities section of this documentation.

Menu Command	Description
Password Change	Allows you to change a user's password
Refresh Application Permissions	Allows you to propagate User and Profile changes to other Noble House applications.

2 File

The File menu provides commands that allow you to manage Users and Profiles.

All of the functions are listed below.

Menu Command

Create Profile

Create User

Edit Profile

Edit User

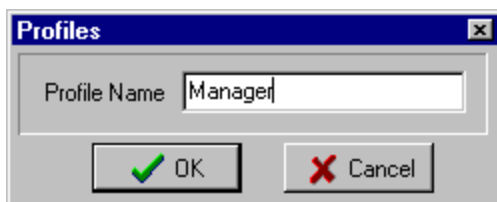
Exit

File: Create Profile

Noble*Security allows you to create a new Profile to which you can then add Users.

To Create a Profile:

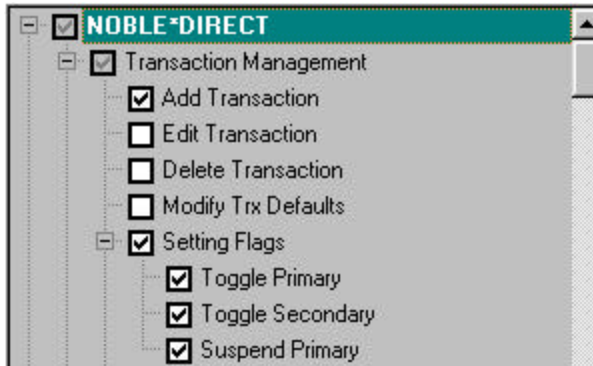
1. From the File menu in the Noble*Security main window, choose the Create Profile command or click the New Profile button. The system displays the Profiles dialog box.



2. Enter the name of the new profile and click OK. The system adds the new profile and displays it in the profile list on the Noble*Security Main Window.



3. Select the options you want enabled for each Noble House application.



Note that if you click any of the boxes furthest to the left, the boxes underneath them will also be selected.

4. Scroll down, selecting all the options you would like enabled for each application; when you are done, click Apply to save your settings.
5. Once you have created the profile, you may Create New Users.

File: Create User

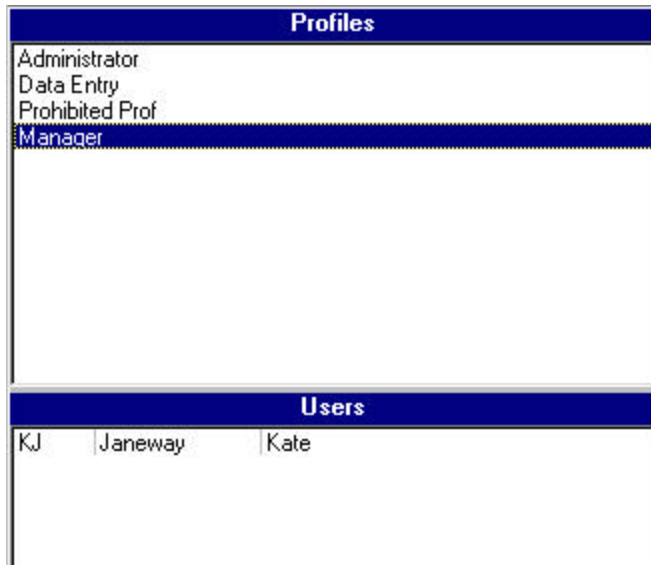
Noble*Security allows you to create Users for an existing Profile.

To Create a User:

1. From the File menu in the Noble*Security main window, choose the Create User command or click the New User button. The system displays the Users dialog box.



2. Enter the user's information, enter the user's password twice to confirm, select the profile you want to use for this user from the drop-down menu, and click OK. The system adds the user to the list of users for that profile.

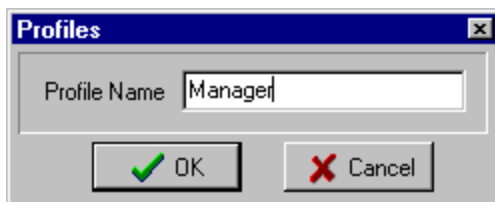


File: Edit Profile

Noble*Security allows you to edit information about an existing Profile.

To Edit a Profile:

1. To view a Profile, click on its name in the list of profiles; the system displays the information in the panel to the right.
2. To change the name of a profile, choose the Edit Profile command from the File menu. The system displays the Profiles dialog box.



3. Enter the new name of the profile and click OK.
4. To change the settings of a profile, click on the profile to select. Then click on each option in the panel at the right that you wish to enable or disable for each of the Noble House applications. When you are done, click Apply to save your settings.

File: Edit User

Noble*Security allows you to edit information about an existing User.

To Edit a User:

1. Click on the name in the list of users and choose the Edit User command from the File menu. The system displays the Users dialog box.



The screenshot shows a dialog box titled "Users" with a close button in the top right corner. The dialog box contains the following fields and controls:

- User Id:** A text box containing "KJ".
- First/Middle/Last:** Two text boxes containing "Kate" and "Janeway".
- Address 1:** A text box containing "123 Presidio Road".
- Address 2:** An empty text box.
- City/State/Zip:** Three text boxes containing "San Francisc", "CA", and "-".
- Password/Confirm:** Two text boxes with masked characters (dots).
- Profile:** A dropdown menu.
- Buttons:** "OK" (with a green checkmark) and "Cancel" (with a red X).

2. Change information as necessary. You may change everything but the password; for that you must use the Change Password Utility.
3. Click OK; the system saves your changes.

File: Exit

To exit the software:

From the File menu in the Noble*Security main window, choose the Exit command or press the Exit button on the toolbar in the main window.

NOTE: Before you exit, make sure you propagate your changes to the Noble House applications by using the Refresh Application Permissions utility.

3 Utilities

Utilities provide support for Noble*Security passwords and for propagating profile and user changes through Noble House applications.

You can access Utilities functionality from the Utilities menu in the Noble*Security Main Window.

All of the functions are listed below.

Menu Command

Password Change

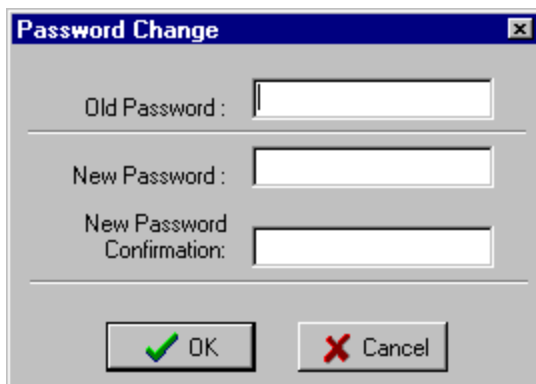
Refresh Application Permissions

Utilities: Password Change

Noble*Security allows you to update User passwords.

To change a password:

1. Click on the user whose password you would like to change.
2. Choose the Password Change command from the Utilities menu or click the Password Change button. The system displays the Password Change dialog box.



The image shows a 'Password Change' dialog box with the following fields and buttons:

- Old Password :
- New Password :
- New Password Confirmation:
- OK (with a green checkmark icon)
- Cancel (with a red X icon)

3. Enter the old password, and then the new password twice. Click OK; the system changes the password.

Utilities: Refresh Application Permissions

Noble*Security allows you to propagate User and Profile changes to other Noble House applications.

To propagate changes:

1. Choose the Refresh Application Permissions command from the Utilities menu. The system updates all Noble House applications with the changes you have made to Users and Profiles.

INDEX

<p style="text-align: center;">A</p> <p>Application Permissions, 3-2</p>	<p style="text-align: center;">O</p> <p>Overview of File, 2-1 Overview of Utilities, 3-1</p>
<p style="text-align: center;">C</p> <p>Create Profile, 2-1 Create User, 2-2</p>	<p style="text-align: center;">P</p> <p>Password, 1-1 Password Change, 3-1 Permissions, 3-2 Profiles, 1-2 Propagate Changes, 3-2</p>
<p style="text-align: center;">E</p> <p>Edit Profile, 2-4 Edit User, 2-5 Exit, 2-5</p>	<p style="text-align: center;">Q</p> <p>Quick Start, 1-1</p>
<p style="text-align: center;">F</p> <p>File - Create Profile, 2-1 File - Create User, 2-2 File - Edit Profile, 2-4 File - Edit User, 2-5 File - Exit, 2-5 File Menu, 1-3</p>	<p style="text-align: center;">R</p> <p>Refresh Application Permissions, 3-2</p>
<p style="text-align: center;">M</p> <p>Main Window, Noble*Security, 1-2</p>	<p style="text-align: center;">S</p> <p>Starting Noble*Security, 1-1</p>
<p style="text-align: center;">N</p> <p>Noble*Security Main Window, 1-2 Noble*Security, Starting, 1-1</p>	<p style="text-align: center;">U</p> <p>User ID, 1-1 Users, 1-2 Utilities - Password Change, 3-1 Utilities - Refresh Application Permissions, 3-2 Utilities Menu, 1-3</p>